

Word Study Quiz #1

1) This is a list of suffixes. **Circle *only* the *vowel suffixes*.**

<-al> <-ing> <-ment> <-ly> <-s> <-es> <-less> <-ure> <-ish> <-ful>

2) Fix this word sum so that it ***shows the change*** that happens to the base.

un + **please** + ant → unpleasant

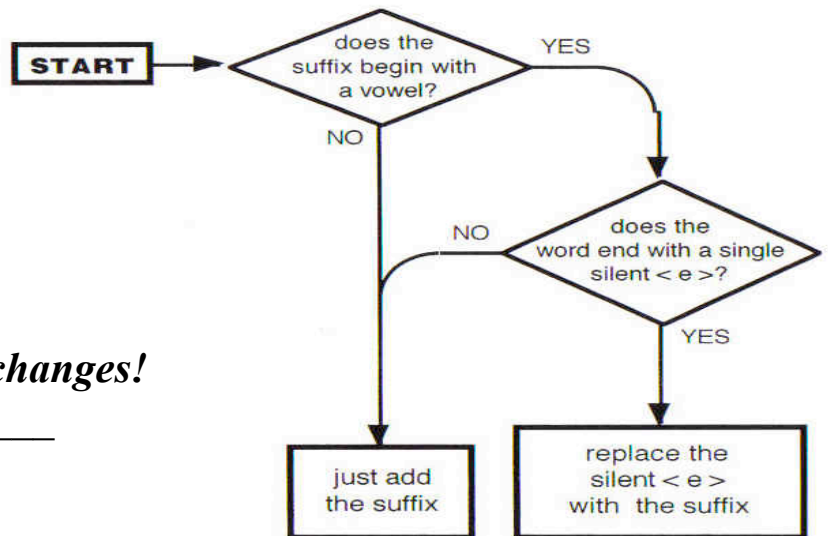
a) The prefix in <unpleasant> is: _____

b) The suffix in <unpleasant> is: _____

c) The base in <unpleasant> is: _____

3) Use the <hope> matrix and the flow chart to help you on these questions:

hope	s ing ed	
	ful	ly
	less	ness



Complete these word sums.
Use the flow chart and ***show any changes!***

a) hope + s → _____

b) hope + ed → _____

c) Make a word sum using <hope> and the suffix <-ing>.

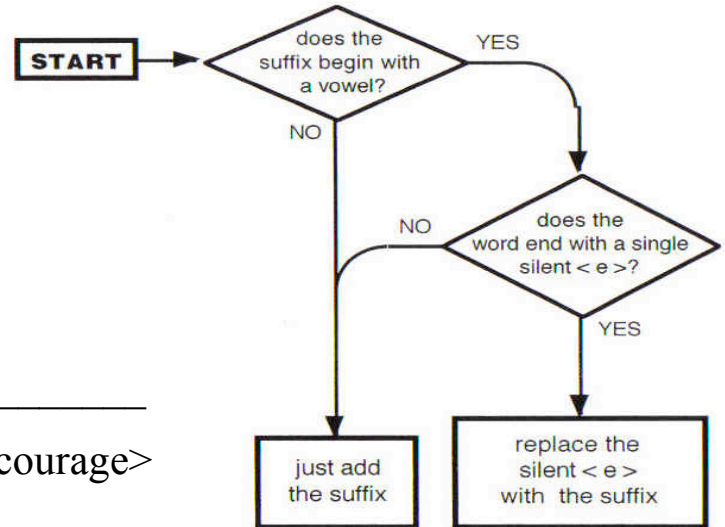
d) Make a word sum using <hope> and two suffixes to make a word you could use in a sentence.

Continue on back of page!

4) Building Word Sums with the <courage> Matrix:

- Build only words you could use in a sentence.
- Show any changes that occur in the word sum.

en dis	courage	es	
		ed	ment
		ing	ly



a) Make a word sum using <courage> with **one prefix**, and **one suffix**.

b) Make a word sum using the **base** <courage> and **two suffixes**.

Bonus Questions! (You can't lose marks – so give these your best try!)

a) Make the word sum for <disbelieving>.

_____ → _____

b) How many morphemes in the word <misbehaving>? ____

c) Write two words with different pronunciations of the base <please>.

d) Look at this word sum: take + away → takeaway

Explain why the single, silent <e> is **not** dropped in this word sum.

e) Make a word sum adding the suffix <-ous> to <courage>. What did we learn about the grapheme <g> from this word sum?